

e-ZGO™ SERIES



Ergonomics matter – whether work occurs at the office or at home. At the same time, products built for the traditional office are designed to meet a broad range of performance standards and often reflect the price points necessary to achieve these requirements. However, when working from home, we should be able to choose products that offer exactly what we need and at prices that fit our budget. Why pay for performance and features that aren't necessary?

ZGO listened, and we are excited to offer a portfolio of height adjustable tables that deliver the right performance at the right price, and ready to ship right to the home. The e-ZGO™ series products are based on ZGO's high performing, commercial grade product designs which have been optimized for Work From Home applications.

Series 21

Series 21 offers all the capabilities of Series 20 but has been enhanced to support a total of 80kg (176 lbs.) of load capacity. More performance, more value.

Enhanced Performance:

A single, quiet motor (<40db) to power the entire unit and 0.1w standby power for the budget-conscious user. Series 21 offers an electric lift up to 80kg/176 lbs. and a travel speed of 36mm/1.4" per second.

Traditional Design:

The rectangular, traditional column (large tube at the bottom/small tube at the top of the column) features a 450mm/17.7" stroke and an overall travel range from 655-1105mm/ 25.8-43.5". The expandable frame accommodates the most common table top shapes & sizes from 24x48" to 30x60".

Performance without Compromise:

Series 21 is an entry level, UL 962 approved frame that offers all the necessary features for a work from home desk. Features like 3 memory positions, anti-collision, and gyro-scope safety technology are included as standard options. Available in ISTA 3A certified packaging to ensure safe, drop shippable parcels wherever and whenever you need them.



e-ZGO™ Series 21



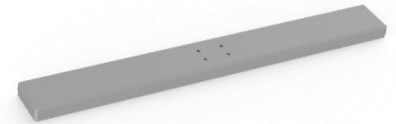
Series 21 offers the same specs as Series 20 but upgraded Speed and Load Capacity.

Features	Specs		
Leg Quantity	2 Leg	Column Foot Connection	T or C Leg
Leg Stage	2 Stage	Feet Length	600mm / 23.6"
Leg Size	80x50mm / 3.15x1.97"	Feet Type	90D Aluminum
Stroke	450mm / 17.7"	Remote Control	6 button programmable
Height Range	Standard: 655-1105mm / 25.8-43.5"		
Top Frame	950-1500mm / 37.4-59.1"		
End Pipe	500mm / 19.7"		
Speed	36mm / 1.4" per second		
Load Capacity	80kg / 176 lbs.		

6 Button Programmable Remote Control

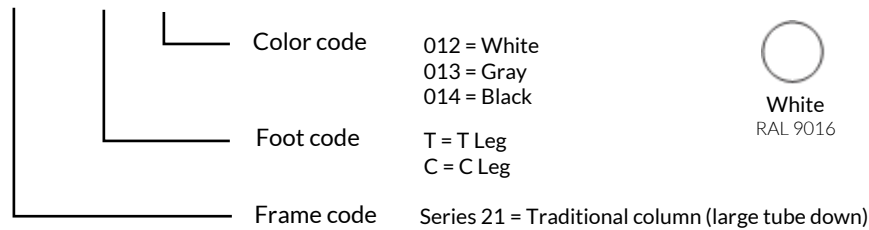


90D Aluminum Foot Type



Ordering Key

Series21 - T - 012



Standard in smooth finish:



AMERICAS

(616) 499-7995
 9:00am - 5:00pm (EST) | M-F
 820 Monroe Ave NW Suite 160
 Grand Rapids, MI 49503

ASIA PACIFIC

+86 021 5778 6203
 9:00am - 5:00pm (CST) | M-F
 13A Floor Fengyuan Building, No. 909
 Xinsongjiang Road, Songjiang
 Shanghai, China 201620
 P.R.C. China

EUROPE

+45 31 11 00 11
 9:00am - 5:00pm (CET) | M-F
 Borupvang 3, 2750
 Balleup, Denmark